

REVISIONS				
ZONE	REV	DESCRIPTION	DATE	APPROVED
-	2	ISSUED FOR USE (10 YEAR UPDATE)	11/20/2023	APG

**GENERAL NOTES**

The installation contractor is solely responsible for site safety. Site visits by Engineered Supply do not include review of the contractor's safety precautions. Installation drawings documenting the base materials and anchor bolts shall be provided by others and shall be reviewed by an experienced licensed engineer for all tieback and rope descent systems, or by a competent qualified person for all fall protection systems.

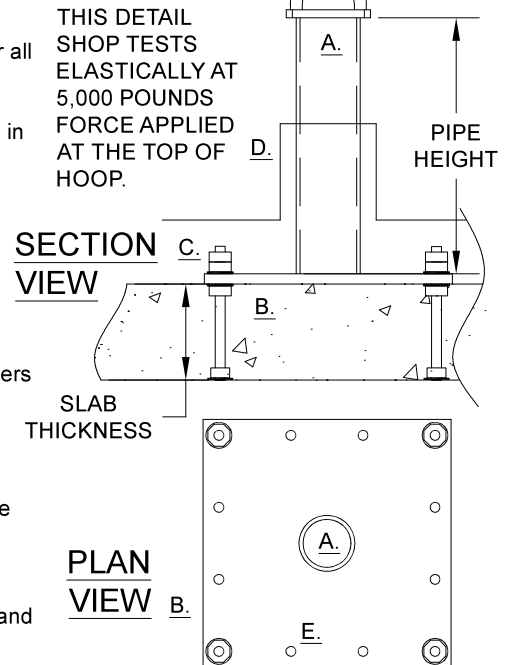
**BASE MATERIALS** Base material shall be capable of supporting the loads shown in accordance with the current applicable codes for the project location.

**ANCHOR BOLTS**  
All anchors shall be installed in strict accordance with the anchor manufacturer's instruction.  
Anchor fasteners shall be torqued with a calibrated wrench in accordance to the anchor manufacturer's literature (40 ftlb).

**INSPECTION AND TRAINING** All fall protection and suspended maintenance equipment shall be selected or designed by others.  
Usage shall comply with the current version of the ANSI IWCA I14.1. Systems users to inspect all equipment prior to each use, including all visible attachment points, locks, and pins to ensure all equipment is in safe working order. All users shall be trained on proper use of the equipment, as well as knowing and complying with OSHA, ANSI and other pertinent life safety regulations.  
Equipment for rope descent and tie back use shall be initially load tested under the direction of a licensed engineer and annually inspected by a competent qualified person. Equipment shall be re-certified within 5 years.

**BUILDING ENVELOPE** Installation and materials surrounding the anchor shall be designed by others in compliance with the applicable manufacturer's instructions and shall maintain the existing building warrantee as applicable.  
Flexible boots shall be provided at all roofing penetrations in accordance with the roofing manufacturer's instruction.

LOAD TO HOOP, ANY DIRECTION  
5,000 POUND ULTIMATE




**KEYED NOTES**

- A. ENGINEERED SUPPLY STRONGTOP UNIVERSAL PIPE ANCHOR, 24" MAXIMUM PIPE HEIGHT.
- B. CONCRETE SLAB, 3,000 PSI MINIMUM COMPRESSIVE STRENGTH, 4" MINIMUM THICKNESS.
- C. 304 STAINLESS STEEL EMBED BOLT WITH LOCTITE. SUPPLY BY ES WITH ANCHOR UNLESS NOTED OTHERWISE. NAIL FOOT TO FORM.
- D. ROOFING FLASHING PER ROOFING MANUFACTURER'S INSTRUCTION. SUPPLY BY INSTALLER UNLESS NOTED OTHERWISE.
- E. ACCEPTABLE TO LEAVE REMAINING HOLES OPEN.

SPECIFICALLY NOTE THAT THE 4" MINIMUM SLAB THICKNESS INDICATES NECESSARY SLAB THICKNESS FOR THE GIVEN HARDWARE. THIS BASE MATERIAL IS REQUIRED TO BE FURTHER VERIFIED FOR THE APPLICABLE LOADS BY THE PROJECT ENGINEER FOR ROPE DESCENT AND TIEBACK, OR BY THE COMPETENT QUALIFIED PERSON FOR FALL PROTECTION.

THIS DETAIL IS COMPLIANT WITH ANSI Z359.18-T, IBC, AISC, AWS, ACI, IWCA I-14.1, OSHA, AND CAL-OSHA.

 <p><b>ENGINEERED SUPPLY</b></p>	<p><b>STRONGTOP®</b> Permanent Suspended Maintenance</p>		
	<p>ES P/N 901002-512</p>		
<p>GENERAL INSTALLATION DETAIL, CAST IN CONCRETE SLAB ATTACHMENT, UNIVERSAL PIPE ANCHOR</p>			
<p>201 2ND AVE SOUTH BAYPORT, MINNESOTA 55003</p>	<p>651-439-0932 ENGINEEREDSUPPLY.COM</p>	SIZE	PATENT NO.
		8.5x11	D772040
<p>THIS DRAWING AND THE DESIGN SHOWN IS THE SOLE PROPERTY OF ENGINEERED SUPPLY.</p>		DWG NO.	901002-512
		SCALE 1" = 1'-0"	SHEET 1 of 1