

REVISIONS				
ZONE	REV	DESCRIPTION	DATE	APPROVED
-	2	ISSUED FOR USE (10 YEAR UPDATE)	11/20/2023	APG

**GENERAL NOTES**

The installation contractor is solely responsible for site safety. Site visits by Engineered Supply do not include review of the contractor's safety precautions.

**BASE MATERIALS** Base material shall be structural steel wide flange beams with a yield strength between 36 ksi and 50 ksi and thickness greater than 1/8" or equal with written approval from Engineered Supply.

Installation drawings documenting the base materials and welds shall be provided by others and shall be reviewed by an experienced site licensed engineer for all tieback and rope descent systems, or by a competent qualified person for all fall protection systems.

**ANCHOR WELDING** Anchor welds shall consist of 3/16", 1/4" or 5/16" leg length field placed fillet welds.

Anchor throat thickness varies based on pipe height, and shall be determined by the base material for the specific installation.

Anchor welds shall be made with E70xx material, or equal weld filler material. All welds shall be in strict accordance to AWS requirements, including welds completed by a certified welder and qualified process with inspection under a Certified Welding Inspector (CWI).

Field welds shall be prepared and field touch up painted with zinc rich paint by others.

**INSPECTION AND TRAINING** All fall protection and suspended maintenance equipment shall be selected or designed by others.

Usage shall comply with the current version of the ANSI IWCA I14.1. Systems users to inspect all equipment prior to each use, including all visible attachment points, locks, and pins to ensure all equipment is in safe working order. All users shall be trained on proper use of the equipment, as well as knowing and complying with OSHA, ANSI and other pertinent life safety regulations.

Equipment for rope descent and tie back use shall be initially load tested under the direction of a licensed engineer and annually inspected by a competent qualified person. Equipment shall be re-certified within 5 years

**BUILDING ENVELOPE** Installation and materials surrounding the anchor shall be designed by others in compliance with the applicable manufacturer's instructions and shall maintain the existing building warrantee as applicable. Flexible boots shall be provided at all roofing penetrations in accordance with the roofing manufacturer's instruction.

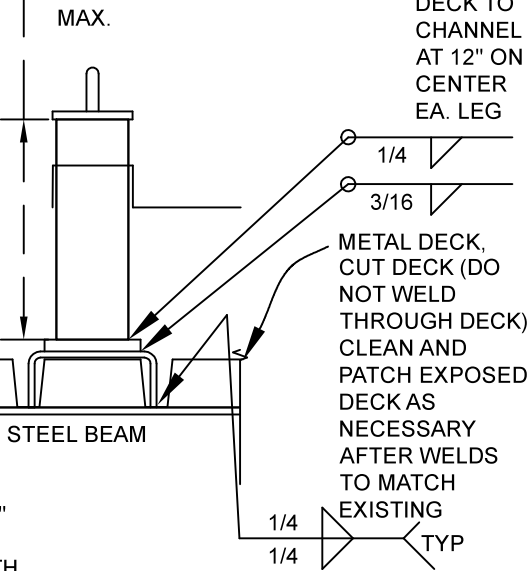
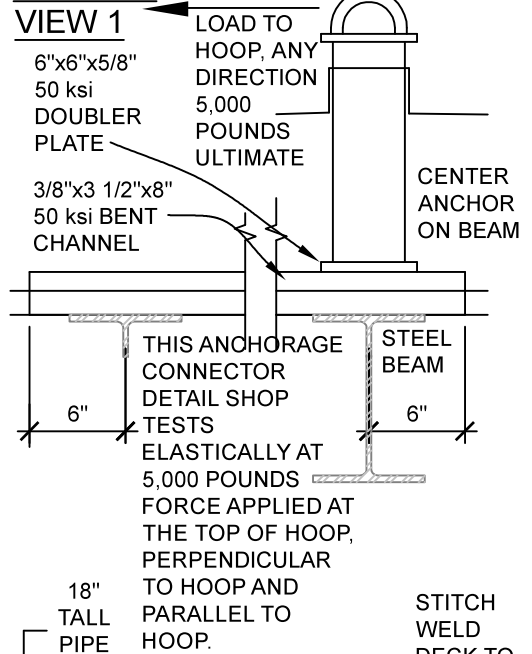
Touch up blemishes in hot dip finish with zinc rich paint, supply by installer.

**SPECIFICALLY NOTE THAT THE INFORMATION GIVEN ARE MINIMUMS FOR THE ANCHORAGE ATTACHMENT. THIS BASE MATERIAL IS REQUIRED TO BE FURTHER VERIFIED FOR THE APPLICABLE LOADS BY THE PROJECT ENGINEER FOR ROPE DESCENT AND TIEBACK, OR BY THE COMPETENT QUALIFIED PERSON FOR FALL PROTECTION.**

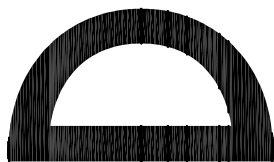
ELECTRODES, STRUCTURAL STEEL, AND ROOFING BY INSTALLER, UNLESS NOTED OTHERWISE, TYPICAL.

STOCKED IN 12", 14", 16", AND 18" PIPE HEIGHTS, THESE STOCKED PRODUCTS ARE COMPLIANT WITH ANSI Z359.18-T, IBC, AISC, AWS, SJI, IWCA I-14.1, OSHA, AND CAL-OSHA.

**SECTION VIEW 1**



**SECTION VIEW 2**



**ENGINEERED SUPPLY**

201 2ND AVE SOUTH  
BAYPORT, MINNESOTA 55003

651-439-0932  
ENGINEEREDSUPPLY.COM

**STRONGTOP®**

Permanent Suspended Maintenance

ES P/N 901004-503

GENERAL INSTALLATION DETAIL,  
STEEL BEAM WITH 3" METAL ROOF  
DECK, WELDED PIPE ANCHOR

SIZE

8.5x11

PATENT NO.

D772040

DWG NO.

901004-503

THIS DRAWING AND THE DESIGN SHOWN IS THE  
SOLE PROPERTY OF ENGINEERED SUPPLY.

SCALE 1" = 1'-0"

SHEET 1 of 1