

REVISIONS				
ZONE	REV	DESCRIPTION	DATE	APPROVED
-	2	ISSUED FOR USE (10 YEAR UPDATE)	11/15/2023	APG

GENERAL NOTES

The installation contractor is solely responsible for site safety. Site visits by Engineered Supply do not include review of the contractor's safety precautions. Installation drawings documenting the base materials and anchor bolts shall be provided by others and shall be reviewed by an experienced licensed engineer for all tieback and rope descent systems, or by a competent qualified person for all fall protection systems.

BASE MATERIALS Base material shall be capable of supporting the loads shown in accordance with the current applicable codes for the project location.

ANCHOR BOLTS All anchors shall be installed in strict accordance with the anchor manufacturer's instruction. Anchor fasteners shall be torqued with a calibrated wrench in accordance to the anchor manufacturer's literature.

INSPECTION AND TRAINING

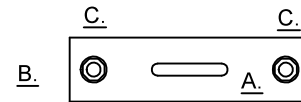
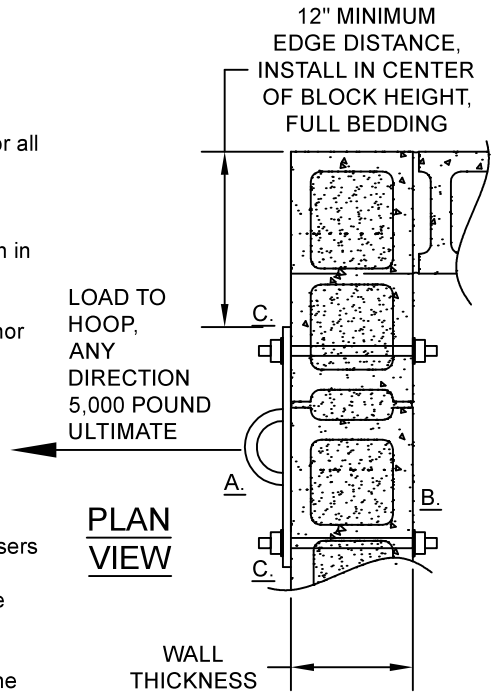
All fall protection and suspended maintenance equipment shall be selected or designed by others. Usage shall comply with the current version of the ANSI IWCA 114.1. Systems users to inspect all equipment prior to each use, including all visible attachment points, locks, and pins to ensure all equipment is in safe working order. All users shall be trained on proper use of the equipment, as well as knowing and complying with OSHA, ANSI and other pertinent life safety regulations. Equipment for rope descent and tie back use shall be initially load tested under the direction of a licensed engineer and annually inspected by a competent qualified person. Equipment shall be re-certified within 5 years.

BUILDING ENVELOPE Installation and materials surrounding the anchor shall be designed by others in compliance with the applicable manufacturer's instructions and shall maintain the existing building warrantee as applicable. Flexible boots shall be provided at all roofing penetrations in accordance with the roofing manufacturer's instruction.

KEYED NOTES

- A.** ENGINEERED SUPPLY STRONGTOP WIDE PLATE ANCHOR.
- B.** CONCRETE MASONRY WALL. 2,000 PSI MINIMUM COMPRESSIVE STRENGTH GROUT FILLED. 8" MINIMUM NOMINAL THICKNESS. RUNNING BOND, WITH JOINT REINFORCING, FULL MORTAR ALL BED JOINTS.
- C.** 3/4" DIAMETER 18-8 STAINLESS STEEL THROUGH BOLT WITH PLATE WASHER AND NUT ON BACK SIDE. USE LOCTITE. TORQUE TO 100 FTLB.

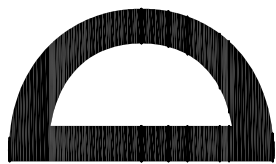
SPECIFICALLY NOTE THAT THE MINIMUM GIVEN INFORMATION INDICATES NECESSARY SUBSTRATE FOR THE FASTENERS. THIS BASE MATERIAL IS REQUIRED TO BE FURTHER VERIFIED FOR THE APPLICABLE LOADS BY THE PROJECT ENGINEER FOR ROPE DESCENT AND TIEBACK, OR BY THE COMPETENT QUALIFIED PERSON FOR FALL PROTECTION.



ELEVATION VIEW

THIS DETAIL SHOP TESTS ELASTICALLY AT 5,000 POUNDS FORCE APPLIED AT THE TOP OF HOOP.

THIS DETAIL IS COMPLIANT WITH ANSI Z359.18-T, IBC, AISC, AWS, ACI, IWCA I-14.1, OSHA, AND CAL-OSHA.



ENGINEERED SUPPLY

201 2ND AVE SOUTH
BAYPORT, MINNESOTA 55003

651-439-0932
ENGINEEREDSUPPLY.COM

STRONGTOP™

Permanent Suspended Maintenance

ES P/N 902002-501

GENERAL INSTALLATION DETAIL,
CONCRETE MASONRY WALL
ATTACHMENT, WIDE PLATE ANCHOR

SIZE

8.5x11

-

DWG NO.

902002-501

THIS DRAWING AND THE DESIGN SHOWN IS THE SOLE PROPERTY OF ENGINEERED SUPPLY.

SCALE 1" = 1'-0"

SHEET 1 of 1