

REVISIONS				
ZONE	REV	DESCRIPTION	DATE	APPROVED
-	2	ISSUED FOR USE (10 YEAR UPDATE)	11/15/2023	APG

GENERAL NOTES

The installation contractor is solely responsible for site safety. Site visits by Engineered Supply do not include review of the contractor's safety precautions.

BASE MATERIALS Base material shall be structural building steel with a yield strength between 36 ksi and 50 ksi or equal with written approval from Engineered Supply.

Installation drawings documenting the base materials and welds shall be provided by others and shall be reviewed by an experienced site licensed engineer for all tieback and rope descent systems, or by a competent qualified person for all fall protection systems.

ANCHOR WELDING Anchor welds shall consist of 3/16", 1/4" or 5/16" leg length field placed fillet welds.

Anchor throat thickness varies based on pipe height, and shall be determined by the base material for the specific installation.

Anchor welds shall be made with E70xx material, or equal weld filler material. All welds shall be in strict accordance to AWS requirements, including welds completed by a certified welder and qualified process with inspection under a Certified Welding Inspector (CWI).

Field welds shall be prepared and field touch up painted with zinc rich paint by others.

INSPECTION AND TRAINING All fall protection and suspended maintenance equipment shall be selected or designed by others.

Usage shall comply with the current version of the ANSI IWCA I14.1. Systems users to inspect all equipment prior to each use, including all visible attachment points, locks, and pins to ensure all equipment is in safe working order. All users shall be trained on proper use of the equipment, as well as knowing and complying with OSHA, ANSI and other pertinent life safety regulations.

Equipment for rope descent and tie back use shall be initially load tested under the direction of a licensed engineer and annually inspected by a competent qualified person. Equipment shall be re-certified within 5 years

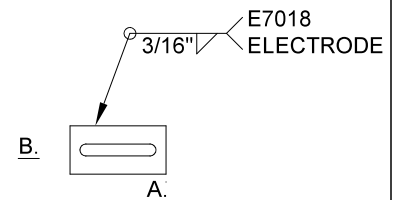
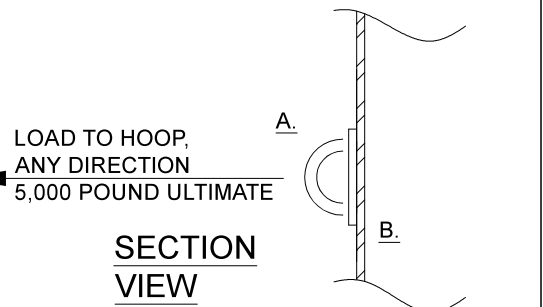
BUILDING ENVELOPE Installation and materials surrounding the anchor shall be designed by others in compliance with the applicable manufacturer's instructions and shall maintain the existing building warranty as applicable.

Touch up blemishes in hot dip finish with zinc rich paint, supply by installer.

SPECIFICALLY NOTE THAT THE INFORMATION GIVEN ARE MINIMUMS FOR THE ANCHORAGE ATTACHMENT. THIS BASE MATERIAL IS REQUIRED TO BE FURTHER VERIFIED FOR THE APPLICABLE LOADS BY THE PROJECT ENGINEER FOR ROPE DESCENT AND TIEBACK, OR BY THE COMPETENT QUALIFIED PERSON FOR FALL PROTECTION.


ELECTRODES, STIFFENER PLATES, ANGLE BRACE, STRUCTURAL STEEL, AND ROOFING BY INSTALLER, UNLESS NOTED OTHERWISE, TYPICAL. THIS STOCKED PRODUCT IS COMPLIANT WITH ANSI Z359.18-T, IBC, AISC, AWS, IWCA I-14.1, OSHA, AND CAL-OSHA.

THIS ANCHORAGE CONNECTOR DETAIL SHOP TESTS ELASTICALLY AT 5,000 POUNDS FORCE APPLIED AT THE TOP OF HOOP, PERPENDICULAR TO HOOP.



KEYED NOTES

- A. ENGINEERED SUPPLY STRONGTOP WELDED PLATE ANCHOR.
- B. STRUCTURAL STEEL BASE MATERIAL.

 <p>ENGINEERED SUPPLY</p>	<p>STRONGTOP®</p> <p>Permanent Suspended Maintenance</p>	
	<p>ES P/N 902004-501</p> <p>GENERAL INSTALLATION DETAIL, STRUCTURAL STEEL ATTACHMENT, WELDED PLATE ANCHOR</p>	
<p>201 2ND AVE SOUTH BAYPORT, MINNESOTA 55003</p>	<p>651-439-0932 ENGINEEREDSUPPLY.COM</p>	<p>SIZE 8.5x11 -</p>
<p>THIS DRAWING AND THE DESIGN SHOWN IS THE SOLE PROPERTY OF ENGINEERED SUPPLY.</p>		<p>DWG NO. 902004-501</p>
<p>SCALE 1" = 1'-0"</p>		<p>SHEET 1 of 1</p>